



T5 Control Box Kit

Model: T5 Automatic Scrubber



This kit is intended for machines manufactured before serial number date code DC1006 (October, 2006)
The purpose of this kit is to prevent free wheeling when key is turned to the off position.

INSTALLATION INSTRUCTIONS:

Installation Time: 2 Hours

TOOLS REQUIRED: 1/2", 9/16" and 10 mm socket wrench, Phillips screwdriver, needle nose pliers and wire cutters.

REMOVING OLD CONTROL BOX

1. Park the machine on a level surface, lower the scrub head and remove the key.

FOR SAFETY: Before installing kit, park machine on a level surface with scrub head lowered.

2. Remove the right side panel from the machine and remove the 4 batteries to access the control box (Figure 1).

FOR SAFETY: When handling batteries, wear protective gloves and eye protection. Avoid contact with battery acid.

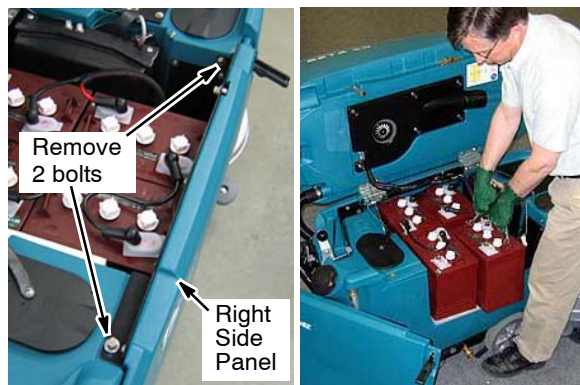


Fig. 1

3. Remove the control box cover to access the wire connections (Figure 2).

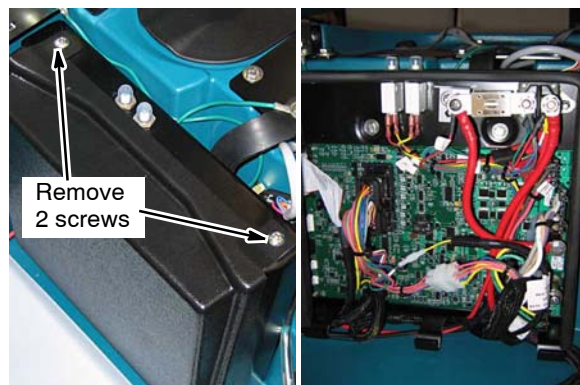


Fig. 2

Kit Contents

Part No.	Description	Qty.
-	CONTROL BOX (PRE-ASSEMBLED)	1
1011086	RELAY, 24VDC, 100A (SPARE)	1
130773	TIE, CABLE, NYL	12

4. Disconnect the wiring from the control box as shown on page 3.
5. Remove the old control box from the machine (Figure 3).

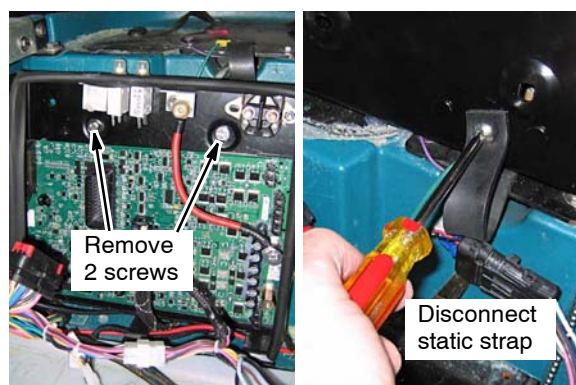


Fig. 3

INSTALLING NEW CONTROL BOX

1. Route the wire harness from the new control box to the floor as shown (Figure 4).

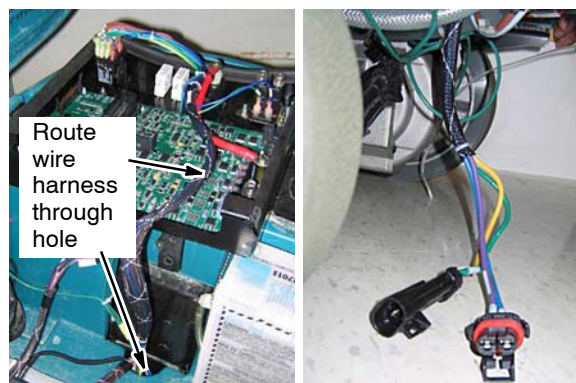


Fig. 4

T5 Control Box Kit INSTALLATION INSTRUCTIONS - Continued

- Reconnect the static strap to the new control box and secure the box to the machine (Figure 5).

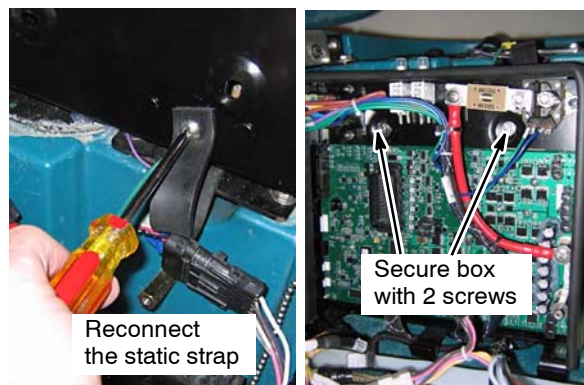


Fig. 5

- Reconnect the machine's wiring to the new control board as described on page 3. Use wire-ties to secure wires within control box.
- Replace the control box cover once all wire connections are made.
- From under the machine, disconnect the transaxle wire harness and connect the routed wire harness from the new control box as shown (Figure 6). Use wire-ties to secure wire harness to machine.

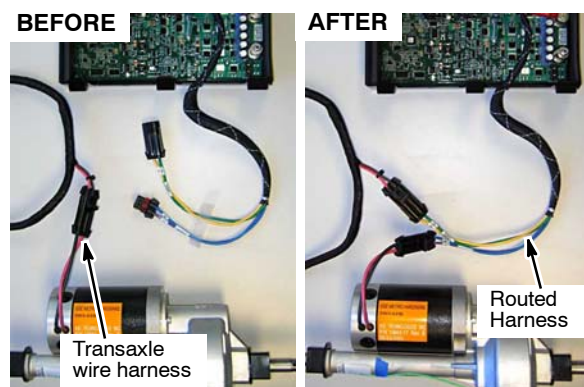


Fig. 6

- Reinstall the batteries and replace the machine's side panel. Refer to battery cable connection label on the machine.
- Program the new control board as described in the next section.
- Test machine for proper operation.

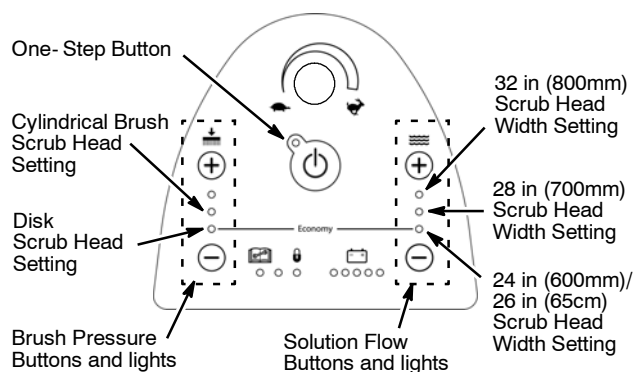
FINAL TEST: On a level surface, turn the key to the off position and try pushing the machine forward. It should not roll freely.

PROGRAM THE NEW CONTROL BOARD

Before operating the machine, the new control board must be programmed to accommodate the scrub head width and type.

To program the control board, press and hold the brush pressure (-) button and the solution flow (-) button at the same time then turn the key on. A brush pressure light and a solution flow light will appear. These lights display a specific setting for scrub head width and type as described below.

To change setting, press and hold the One-step button until it starts to blink. Then press the brush pressure (+) button and the solution flow (+) button to change settings as described below. Restart key to store settings.



T5 Control Box Kit INSTALLATION INSTRUCTIONS - Continued

CONTROL BOX WIRE CONNECTIONS

New control box shown

